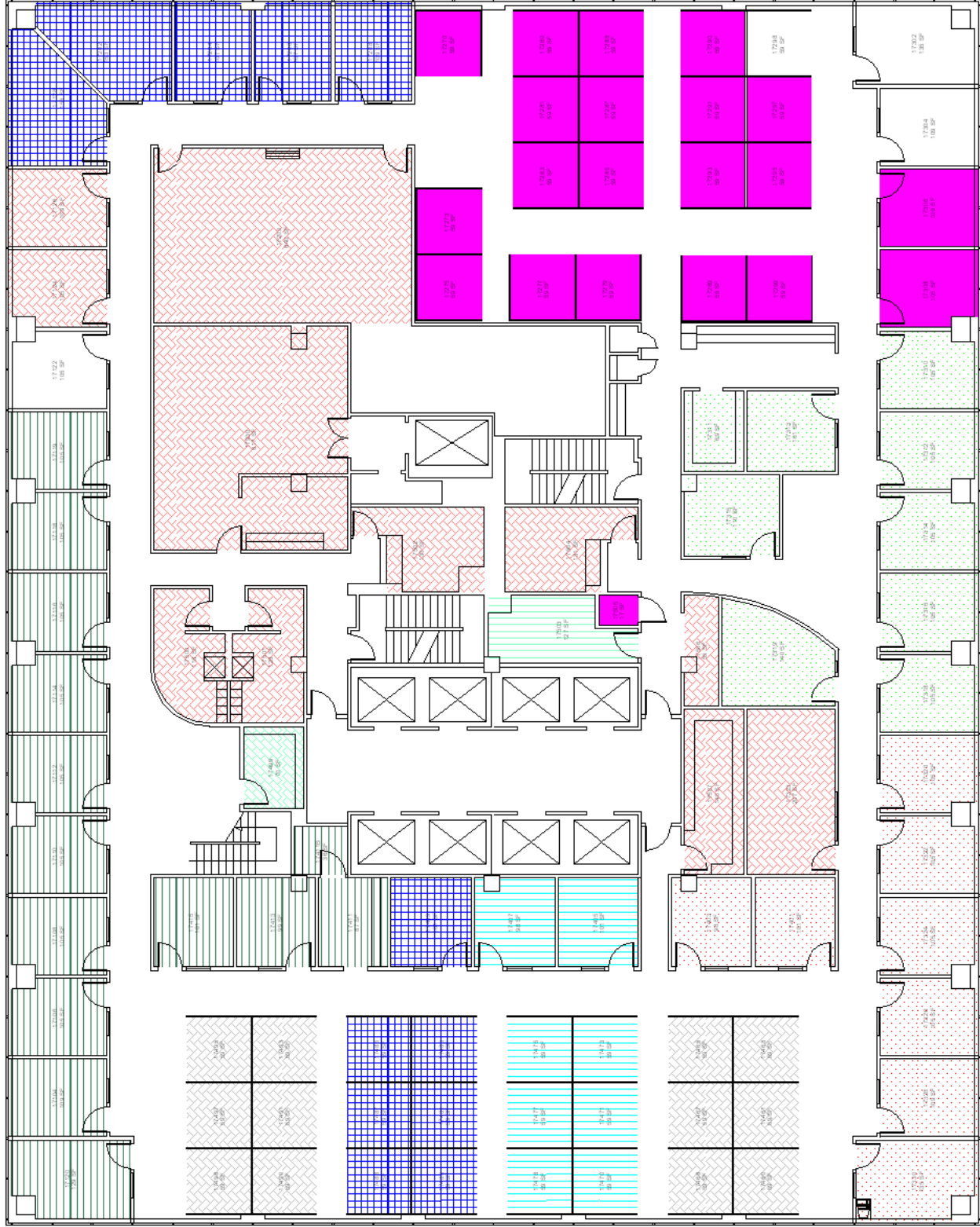


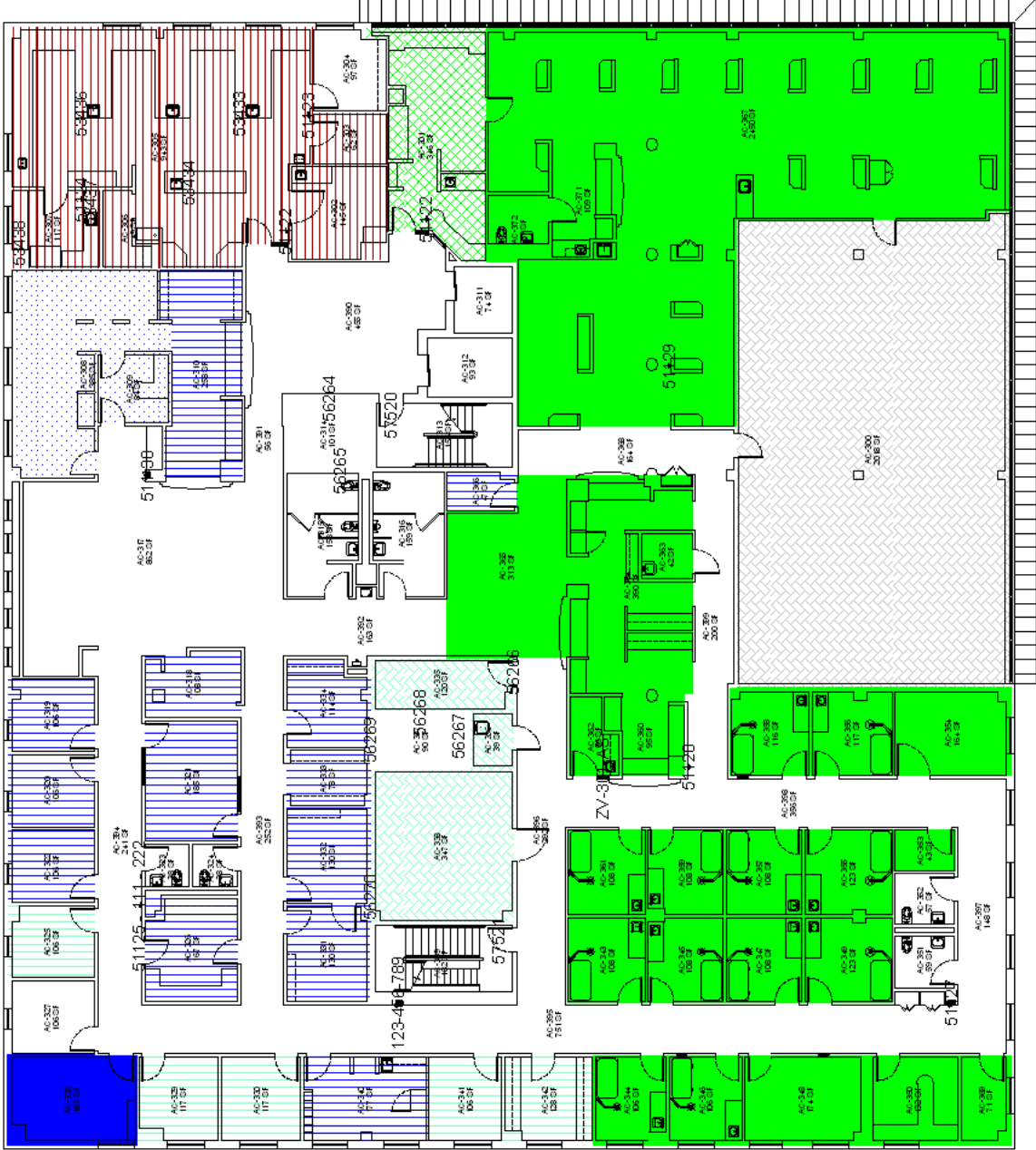
- <none> Area 407
- 1/001 Administration Area 2,379
- 1/002 Legal Services Area 1,084
- 1/003 Marketing Area 943
- 1/004 Nursing Administration Area 861
- 1/005 Fiscal Services Area 1,398
- 1/006 Human Resources Area 554
- 1/009 Information Systems Area 1,292
- 2/002 Housekeeping Area 70
- 2/003 Maintenance Area 127
- Empty Unassigned Space Area 708
- Total Area 9,823



11/26/2005	AD-17
<i>Facility Manager</i>	NOT TO SCALE
Space Plan	ADMINISTRATION 17-FM
CW	

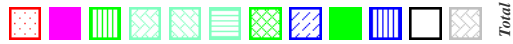
- <none>
- Area 203
- 2001 Facilities Management
- Area 467
- 2002 Housekeeping
- Area 39
- 2003 Maintenance
- Area 573
- 3004 Cancer Center
- Area 5,446
- 3006 Hematology
- Area 1,317
- 3007 Pharmacy
- Area 346
- 3009 Medical Records
- Area 469
- 3010 Neurology
- Area 1,712
- 4001 Desktop Services
- Area 183
- CA Common Areas
- Area 5,142
- Empty, Unassigned Space
- Area 2,018
- Total Area

17,915



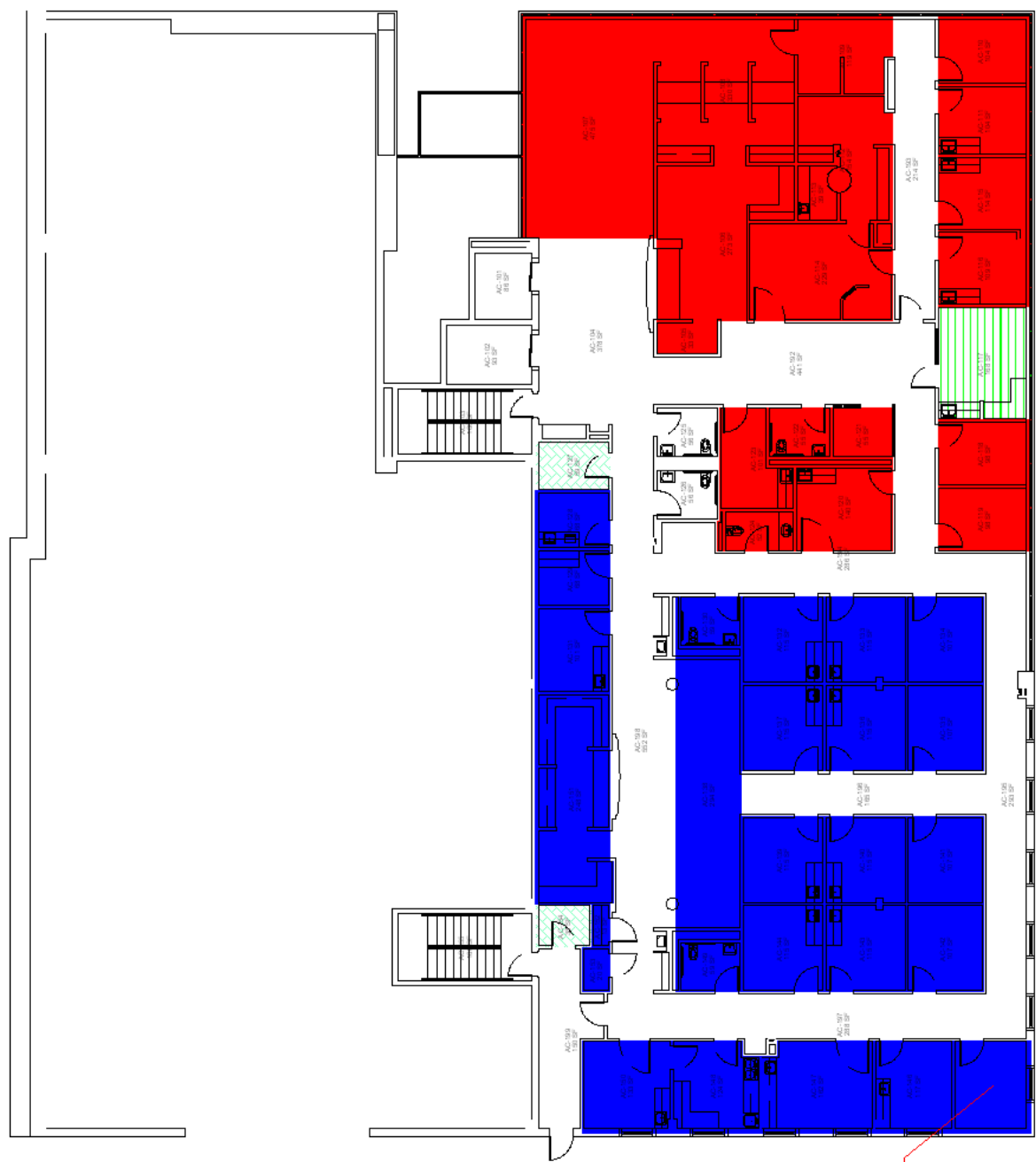
11/26/2005	AC-3
<i>Facility Manager</i>	
NOT TO SCALE	
Space Plan	
ACB 3-FM	
CW	

- 1004 Nursing Administration Area 1,416
- 1009 Information Systems Area 72
- 1010 Laboratory Services Area 108
- 2001 Facilities Management Area 411
- 2002 Housekeeping Area 124
- 2003 Maintenance Area 571
- 2004 Grounds Area 252
- 2005 Biomedical Engineering Area 538
- 3004 Cancer Center Area 8,294
- 3005 Hemophilia Clinic Area 1,500
- CA Common Areas Area 6,105
- Empty, Unassigned Space Area 1,273
- Total Area 20,664



11/26/2005	AC-2
Facility Manager	
NOT TO SCALE	
Space Plan	
ACB 2-FM	
CW	

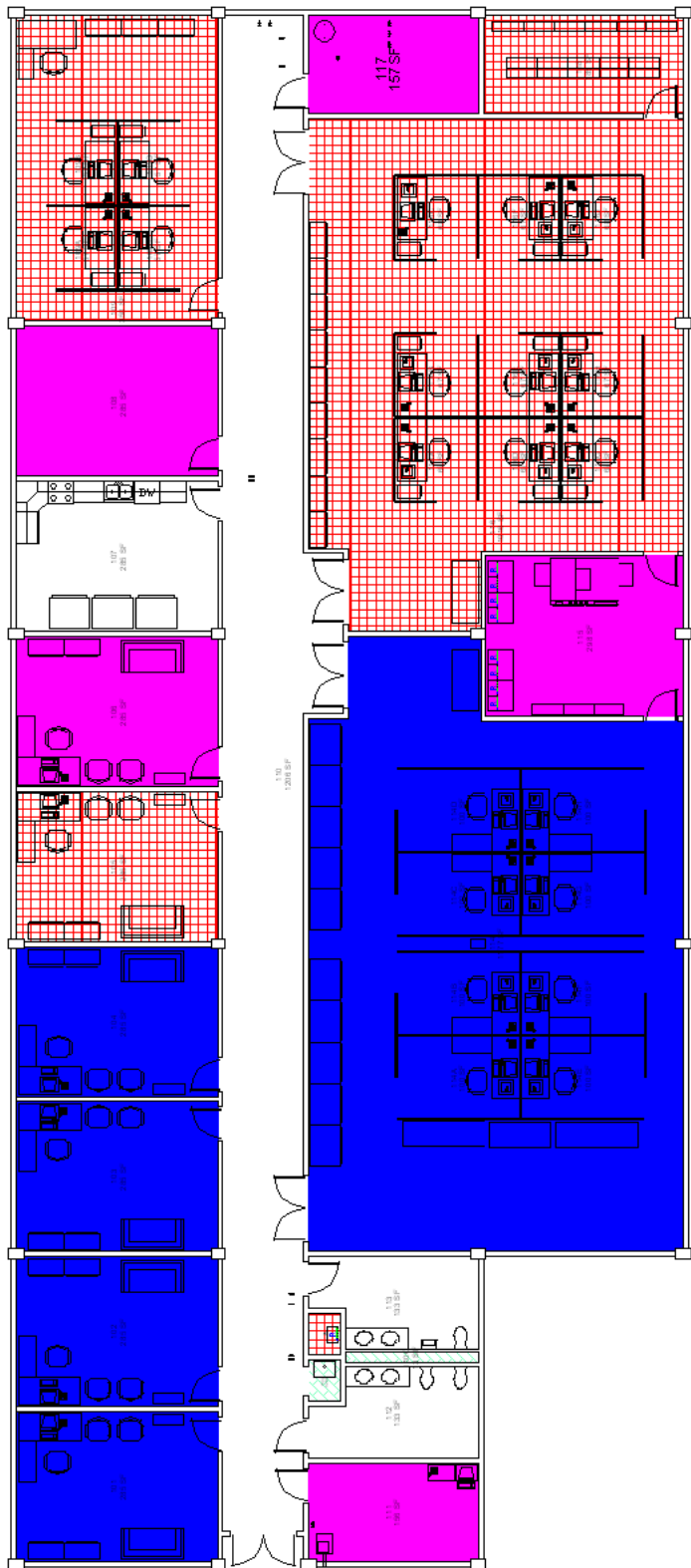
- 1010 Laboratory Services
Area 168
- 2001 Facilities Management
Area 59
- 2002 Housekeeping
Area 38
- 3001 Orthopedics Clinic
Area 2,929
- 3002 Radiology
Area 2,680
- CA Common Areas
Area 3,380
- Total Area
9,254



AC-145
113 SF

11/26/2005	AC-1
<i>Facility Manager</i>	
NOT TO SCALE	
Space Plan	
ACB 1-FM	
CW	

- 1009 Information Systems
- Area 1,180
- 2001 Facilities Management
- Area 13
- 2002 Housekeeping
- Area 12
- 4001 Desktop Services
- Area 3,116
- 4002 Network Services
- Area 2,683
- CA Common Areas
- Area 1,757
- Total Area
- 8,761



11/26/2005	DC-1
<i>Facility Manager</i>	
NOT TO SCALE	
Space Plan	
FACILITY 1-FM	
CW	